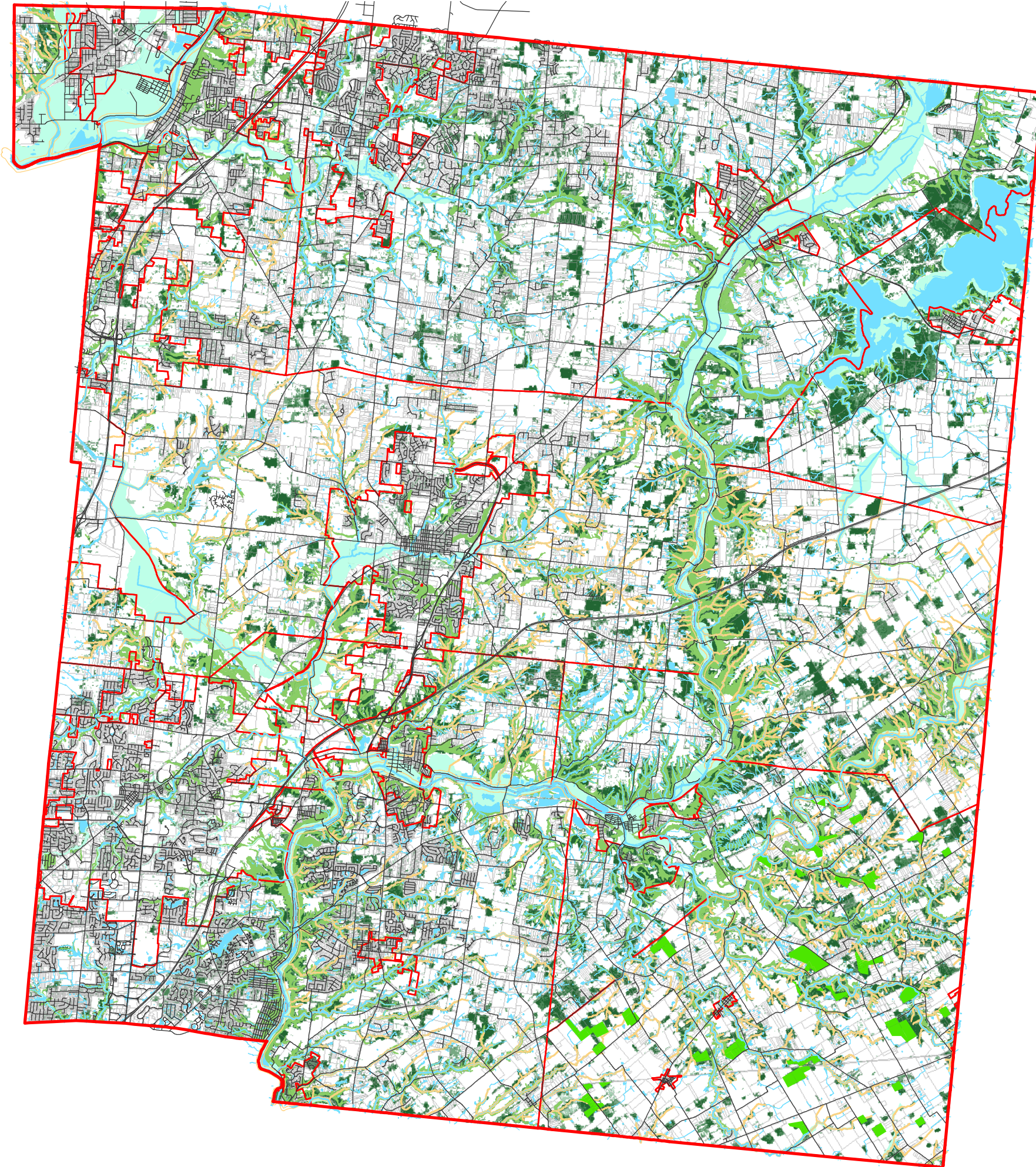
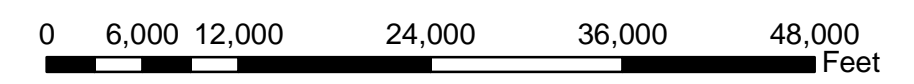
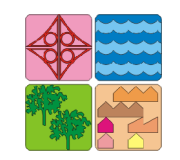


Warren County Areas Of Environmental Significance



- County Boundary
 - Local Jurisdiction Boundaries
 - Public Roads
 - Parcel Boundaries
 - Rivers, Creeks & Streams
 - Lakes & Ponds
 - 100 Year Floodplain
 - Recommended Stream Setbacks
 - Steep Sloped Areas
 - ODNR Protection Woodlands
- Woodlands Rating
- 0 - 15 Lowest Value
 - 15+ to 40
 - 40+ to 59
 - 59+ to 76
 - 76+ to 100 Highest Value



Scale: 1 Inch = 12,000 Feet

