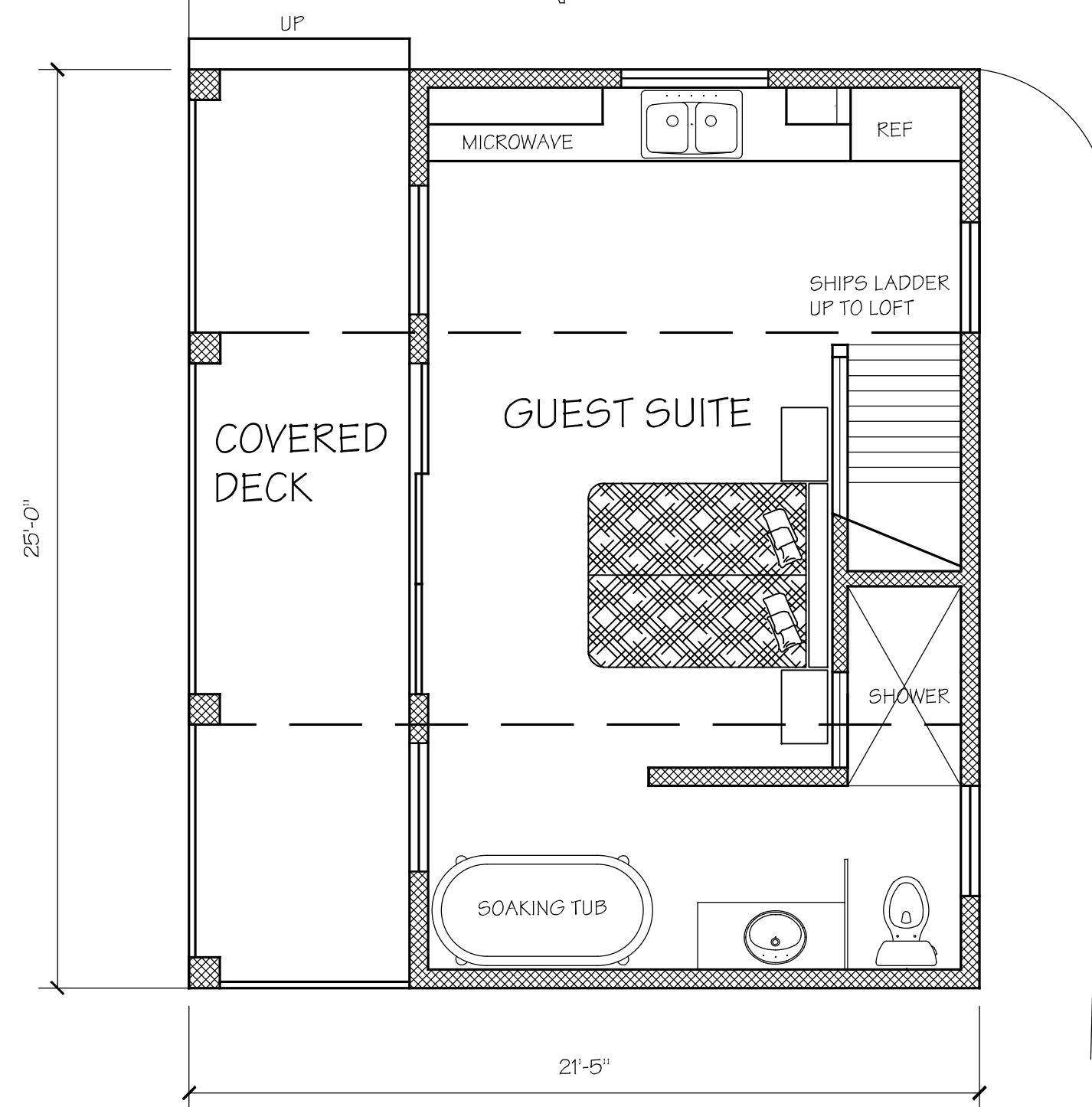
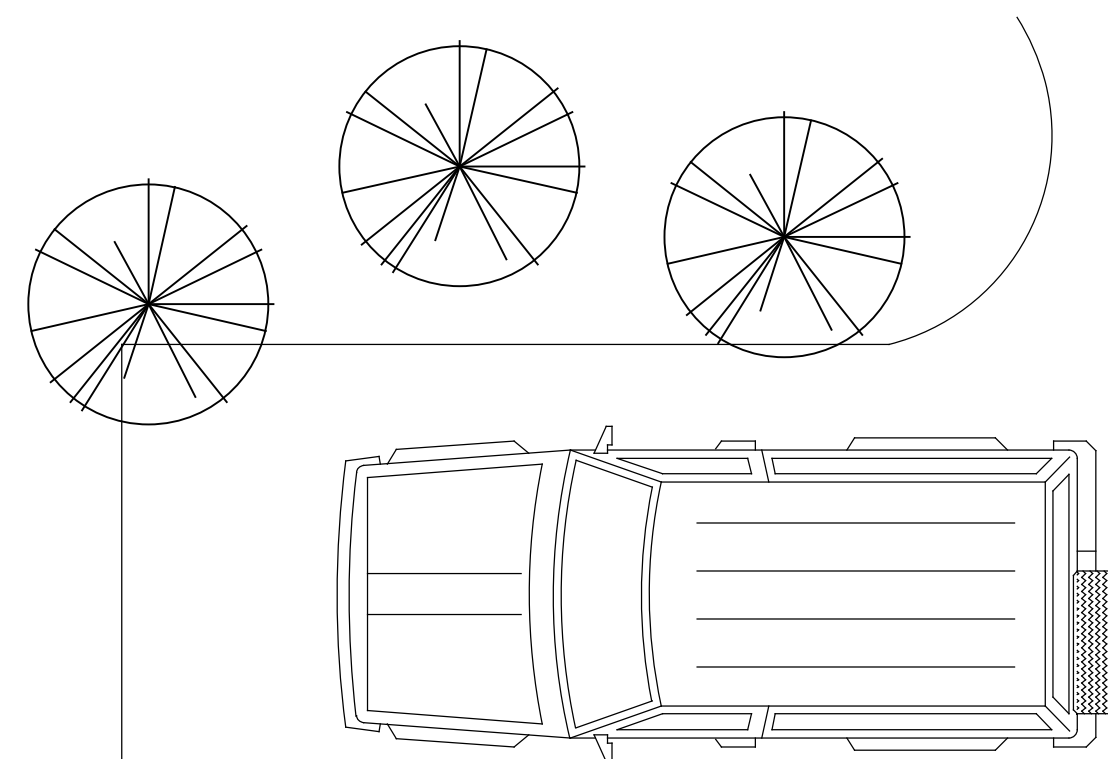
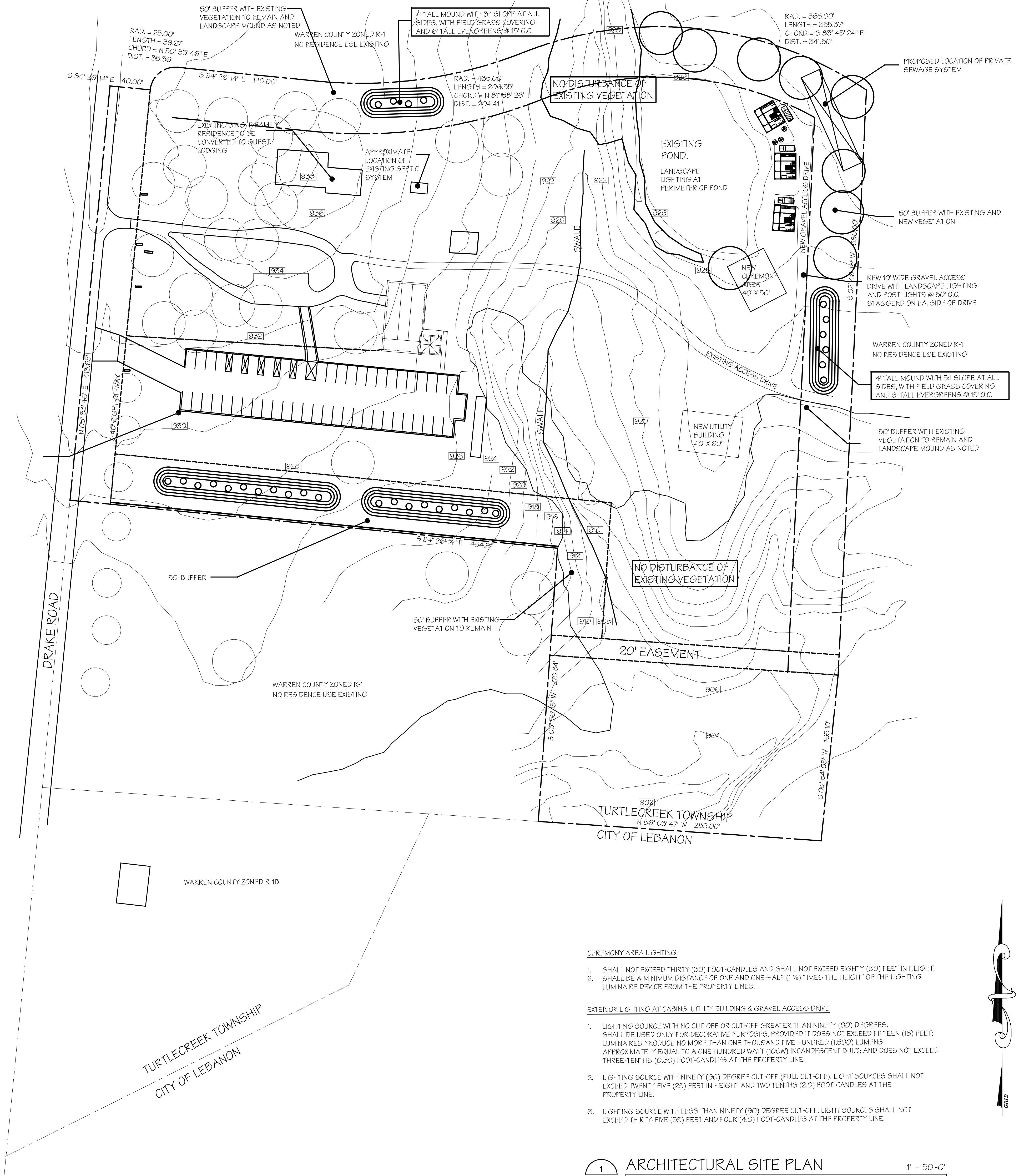


3 AS LOFT PLAN 1/4" = 1'-0"



2 AS GUEST COTTAGE PLAN 1/4" = 1'-0"



- CEREMONY AREA LIGHTING**
- SHALL NOT EXCEED THIRTY (30) FOOT-CANDLES AND SHALL NOT EXCEED EIGHTY (80) FEET IN HEIGHT.
 - SHALL BE A MINIMUM DISTANCE OF ONE AND ONE-HALF (1 1/2) TIMES THE HEIGHT OF THE LIGHTING LUMINAIRE DEVICE FROM THE PROPERTY LINES.
- EXTERIOR LIGHTING AT CABINS, UTILITY BUILDING & GRAVEL ACCESS DRIVE**
- LIGHTING SOURCE WITH NO CUT-OFF OR CUT-OFF GREATER THAN NINETY (90) DEGREES. SHALL BE USED ONLY FOR DECORATIVE PURPOSES, PROVIDED IT DOES NOT EXCEED FIFTEEN (15) FEET; LUMINAIRES PRODUCE NO MORE THAN ONE THOUSAND FIVE HUNDRED (1,500) LUMENS APPROXIMATELY EQUAL TO A ONE HUNDRED WATT (100W) INCANDESCENT BULB; AND DOES NOT EXCEED THREE-TENTHS (0.30) FOOT-CANDLES AT THE PROPERTY LINE.
 - LIGHTING SOURCE WITH NINETY (90) DEGREE CUT-OFF (FULL CUT-OFF). LIGHT SOURCES SHALL NOT EXCEED TWENTY FIVE (25) FEET IN HEIGHT AND TWO TENTHS (2.0) FOOT-CANDLES AT THE PROPERTY LINE.
 - LIGHTING SOURCE WITH LESS THAN NINETY (90) DEGREE CUT-OFF, LIGHT SOURCES SHALL NOT EXCEED THIRTY-FIVE (35) FEET AND FOUR (4.0) FOOT-CANDLES AT THE PROPERTY LINE.



ARCANUM ARCHITECTURE
 7711 CAMARGO RD.
 MADEIRA, OH. 43249
 (614) 513-2711-9070
 (FAX) 513-271-4791
 (CELL) 513-236-1034
 E-MAIL: MATTHEW.EVANS@FUSION.NET

STATE OF OHIO
 REGISTERED ARCHITECT
 MATTHEW K. EVANS
 13086
 MATTHEW K. EVANS, LICENSE #13086
 EXPIRATION DATE 12/31/2025

REVISIONS

GUEST COTTAGES
CEDAR BAY FARM
 2206 DRAKE RD. LEBANON OH. 45036

SHEET
AS
 OF

1 AS ARCHITECTURAL SITE PLAN 1" = 50'-0"